



School of Business and Economics

Name of Institution **Maastricht University School of Business and Economics**

Erasmus code **NL MAASTRIO1
28843-IC-1-2007-1-NL-ERASMUS-EUCX-1**

Postal Address P.O. Box 616
6200 MD Maastricht
The Netherlands

Visiting Address/ Tongersestraat 53/G2.25
Address for courier mail 6211 LM Maastricht
The Netherlands

Prof. Dr J.G.A.M. Lemmink Dean of the School
*As of 01 September 2013 Prof. Dr J.G.A.M.Lemmink will leave his position
and will be succeeded by Prof. Dr P. Vergauwen*

Prof. Dr M. Heijltjes Associate Dean for Strategic Development and Internationalisation

Website <http://www.maastrichtuniversity.nl/sbe>

INTERNATIONAL RELATIONS OFFICE

Tel: +31 43 388 37 06

No fax number





School of Business and Economics

International Relations Office Staff

Ms Lyan Ploumen
Director International Relations Office
Telephone: +31 43 388 37 86
E-mail: L.Ploumen@maastrichtuniversity.nl

Ms Ieke de Haan
Coordinator Outgoing Students
Telephone: +31 43 388 37 11
E-mail: I.deHaan@maastrichtuniversity.nl

Ms Magda Lalicic
Outgoing Students Officer
(Asia, Australia, New-Zealand, South Africa & South America)
Telephone: +31 43 388 37 06
E-mail: M.Lalicic@maastrichtuniversity.nl

Ms Kiki Camps
Outgoing Students Officer (Europe, Canada & USA)
Telephone: +31 43 388 3930
E-mail: K.Camps@maastrichtuniversity.nl

Ms Nicole Weerts
Coordinator BSc Internships (for SBE students only)
Telephone: +31 43 388 37 48
E-mail: N.Weerts@maastrichtuniversity.nl

Ms Anouk Quaden
Coordinator MSc Internships (for SBE students only)
Telephone: +31 43 388 39 30
E-mail: A.Quaden@maastrichtuniversity.nl

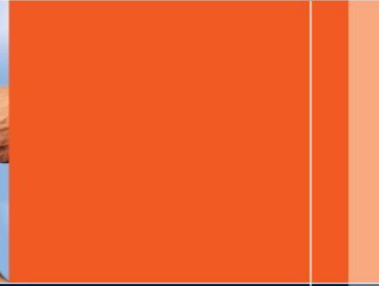
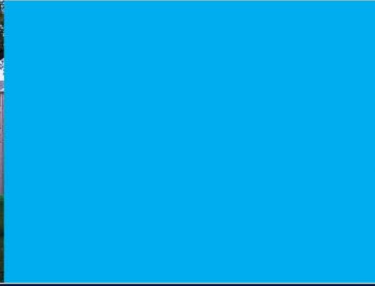
Ms Wendy Hardy
Coordinator International Relations/
Agreements Officer
Telephone: +31 43 388 35 59
E-mail: W.Hardy@maastrichtuniversity.nl

Ms Ellen Nelissen
Manager Double Degree Programmes
Telephone: +31 43 388 37 38
E-mail: Ellen.Nelissen@maastrichtuniversity.nl

Ms Renée Rijnders
Coordinator Double Degree/ Incoming Students
Telephone: +31 43 388 35 77
E-mail: R.Rijnders@maastrichtuniversity.nl

Ms Ruth Reynders
Coordinator MSc Exchange/Incoming Students
Telephone: +31 43 388 35 77
E-mail: R.Reynders@maastrichtuniversity.nl

Ms Sabine Nieveelstein
Incoming Students Officer
Telephone: +31 43 388 37 06
E-mail: S.Nieveelstein@maastrichtuniversity.nl



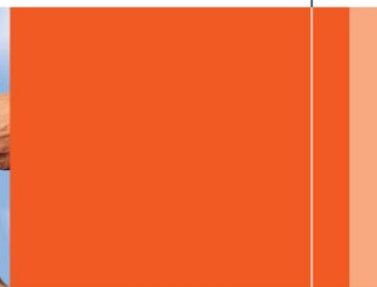
School of Business and Economics

Study Programmes

The language of instruction is English. Exchange students can select courses out of the following programmes:

- Bachelor of Science in Economics and Business Economics
- Bachelor of Science in Econometrics and Operations Research
- Bachelor of Science in Fiscal Economics
- Bachelor of Science in International Business
- Master of Science in Business Research
- Master of Science in Econometrics and Operations Research
- Master of Science in Economic and Financial Research
- Master of Science in Financial Economics
- Master of Science in Fiscal Economics
- Master of Science in Human Decision Science
- Master of Science in Information and Network Economics
- Master of Science in International Business
- Master of Science in Management of Learning

For more detailed information about the specialisations, please check:
www.maastrichtuniversity.nl/sbe → Prospective Students → Exchange Programme → Incoming Students → Courses



School of Business and Economics

Academic Calendar 2013/2014

FALL SEMESTER

29 & 30 August 2013: Compulsory Introduction

Days

02 September 2013: start classes

21 - 25 October 2013: exams period 1

16 - 20 December 2013: exams period 2

06 - 10 January 2014: re-sits period 1

13 - 24 January 2014: skills period 3 (not compulsory)

Application Deadline:

15 May 2013

Course Registration Period 1:

01 June - 15 July 2013

SPRING SEMESTER

30 & 31 January 2014: Compulsory Introduction

Days

03 February 2014: start classes

31 March - 04 April 2014: exams period 4

07 - 11 April 2014: re-sits period 2 (part fall semester)

02 - 06 June 2014: exams period 5

10 - 13 June 2014: re-sits period 4

16 - 27 June 2014: skills period 6 (not compulsory)

07 - 11 July 2014: re-sits period 5

Application Deadline:

15 October 2013

Course Registration Period 4:

29 October - 24 November 2013

Please note that the academic calendar is still subject to change and will only be definite by the end of April 2013. However we do not expect any drastic changes.



School of Business and Economics

Accommodation

UM Guesthouse

Most exchange students end up staying at the UM Guesthouse. The buildings are located in the vicinity of the Faculties and are easily accessible by bike or on foot. Unfortunately SBE cannot guarantee that all students who apply for a room at the Guesthouse actually get a room. Applications are processed on a first-come-first-served basis, and we have no influence on that process.

Office / Reception address:

Brouwersweg 100

6216 EG Maastricht

Phone: (0031) (0)43 388 5970

Fax: (0031) (0)43 346 7230

Email: guesthouse@maastrichtuniversity.nl

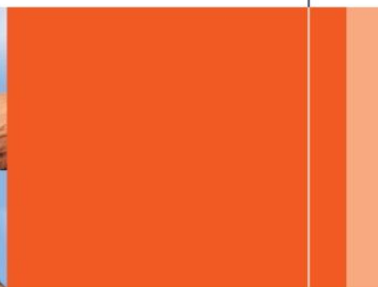
Internet: www.Maastrichthousing.com

Other Housing Options

Of course exchange students are not obliged to get a room in the UM Guesthouse, even though it is the easiest option. Students can also find a room on the private market. Check the following websites for alternatives:

- www.HousingAnywhere.com: local, outgoing students sublet their room for a short period of time to incoming students.
- www.Maastrichthousing.com: acts as intermediary for the local housing corporations in the so-called “social” rent sector, and is also the portal for the UM Guesthouse.

*It may be good to realise that SBE's International Relations Office **cannot and will not** interfere on your behalf in case of legal disputes, whether with the UM Guesthouse, MaastrichtHousing, HousingAnywhere, Kamerburo, or private persons or landlords. If faced with legal problems you are advised to go to the student law agency (“Studenten Rechtsbureau”), which is an agency for all UM students, run by UM Law Students.*

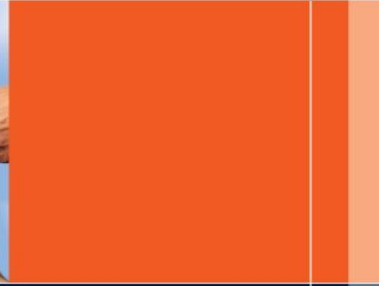
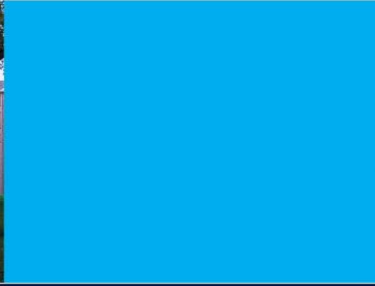


School of Business and Economics

Residence Permit/Visa

Nationals of the following countries do not need a visa to study in The Netherlands: Members of the EU, EEA, Australia, Canada, Japan, Monaco, New Zealand, South Korea, United States of America, Vatican City State.

A visa is necessary for nationals of all other countries when staying for more than three months. All non-EU nationals need a residence permit for a stay of more than three (3) months. Please check the webpage of our Visa Office for more information: <http://www.maastrichtuniversity.nl/visa>



School of Business and Economics

Nuffic Certificate

Students with the Chinese nationality (excluding British National Overseas) are required to submit a Nuffic Certificate. This is a document issued by Nuffic (Netherlands organization for international cooperation in higher education) that provides an assessment of a student's English language proficiency and of the validity of the diplomas and degrees. Chinese students who wish to enrol in an English-taught programme at a Dutch higher education institution are required to apply for a Nuffic Certificate.

Please note that the registration for a "Nuffic Certificate" does NOT replace the regular application procedures of the Dutch universities and institutions of higher education.

The entire application procedure for the Nuffic Certificate is available on the Nuffic webpage via: <http://www.nuffic.nl/international-students> → Practical Matters → Visas and permits → Nuffic Certificate for Chinese students → Application procedure

We strongly recommend students to register for the Nuffic Certificate at least four months prior to their intended departure for the Netherlands.