

School of Business and Economics

Name of Institution **Maastricht University School of Business and Economics**

Postal Address P.O. Box 616
6200 MD Maastricht
The Netherlands

Visiting Address/ Tongersestraat 53/G2.25
Address for courier mail 6211 LM Maastricht
The Netherlands

ERASMUS code NL MAASTRIO1

Dean of the School Prof. Dr J.G.A.M. Lemmink

Website <http://www.maastrichtuniversity.nl/sbe>

INTERNATIONAL RELATIONS OFFICE

Tel: +31 43 388 37 06





School of Business and Economics

IRO Staff

Ms Lyan Ploumen
Director International Relations Office
Telephone: +31 43 388 37 86
E-mail: L.Ploumen@maastrichtuniversity.nl

Ms Ieke de Haan
Coordinator Outgoing Students
Telephone: +31 43 388 37 11
E-mail: I.deHaan@maastrichtuniversity.nl

Ms Anouk Quaden
Outgoing Students Officer
(Asia, Australia, Canada, New-Zealand, South Africa
& South America)
Telephone: +31 43 388 39 30
E-mail: A.Quaden@maastrichtuniversity.nl

Ms Kiki Camps
Outgoing Students Officer (Europe & USA)
Telephone: +31 43 388 3930
E-mail: K.Camps@maastrichtuniversity.nl

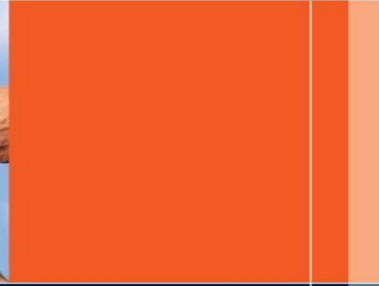
Ms Wendy Hardy
Coordinator International Relations
Telephone: +31 43 388 35 59
E-mail: W.Hardy@maastrichtuniversity.nl

Ms Ellen Nelissen
Manager Double Degree Programmes
Telephone: +31 43 388 37 38
E-mail: Ellen.Nelissen@maastrichtuniversity.nl

Ms Renée Rijnders
Coordinator Double Degree/ Incoming Students
Telephone: +31 43 388 35 77
E-mail: R.Rijnders@maastrichtuniversity.nl

Ms Ruth Reynders
Coordinator MSc Exchange/Incoming Students
Telephone: +31 43 388 35 77
Email: R.Reynders@maastrichtuniversity.nl

Ms Magda Lalicic
Incoming Students Officer
Telephone: +31 43 388 37 06
Email: M.Lalicic@maastrichtuniversity.nl



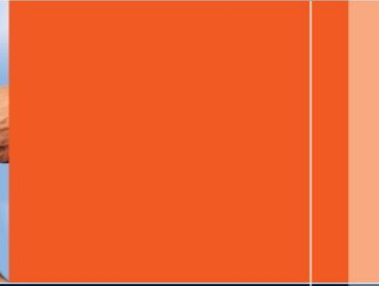
School of Business and Economics

Study Programmes

The language of instruction is English.

Exchange students can select courses out of the following programmes:

- Bachelor of Science in International Business
 - Bachelor of Science in Economics and Business Economics
 - International Economic Studies
 - Infonomics
 - International Business Economics
 - Bachelor of Science in Econometrics & Operations Research
 - Bachelor of Science in Fiscal Economics
-
- Master of Science in International Business with specialisation in:
 - Accounting
 - Business Intelligence
 - Controlling
 - Entrepreneurship
 - Finance
 - Supply Chain Management
 - Information management
 - Marketing-Finance
 - Organisation
 - Strategic Marketing
 - Strategy and Innovation
 - Master of Science in Economic and Financial Research
 - Master of Science in Infonomics



School of Business and Economics

- Master of Science in Economic Studies (prev. International Economic Studies) with specialisation in:
 - Competition and Regulation
 - European Economic Policy
 - Global Innovation Economics
 - Managerial Economics
 - Public Economics
 - Social Economics
- Master of Science in Fiscal Economics
- Master of Science in Global Supply Chain Management and Change
- Master of Science in Financial Economics with specialisation in:
 - Asset Pricing
 - Banking
 - Financial Analysis
- Master of Science in Econometrics and Operations Research with specialisation in:
 - Actuarial Sciences
 - Econometrics
 - Mathematical Economics
 - Operations Research
- Master of Science in Management of Learning
- Master of Science in Business Research
- Master of Science in Human Decision Science



School of Business and Economics

Academic Calendar 2012/2013

FALL SEMESTER

30 August 2012: Compulsory Introduction Day

03 September 2012: start classes

22 - 26 October 2012: exams period 1

17 - 21 December 2012: exams period 2

07 - 11 January 2013: re-sits period 1

14 - 25 January 2013: skills period 3 (not compulsory)

Application Deadline:

15 May 2012

Course Registration Period 1:

01 June - 15 July 2012

SPRING SEMESTER

31 January 2013: Compulsory Introduction Day

04 February 2013: start classes

02 - 05 April 2013: exams period 4

08 - 12 April 2013: re-sits period 2 (part fall semester)

03 - 07 June 2013: exams period 5

10 - 14 June 2013: re-sits period 4

17 - 28 June 2013: skills period 6 (not compulsory)

08 - 12 July 2013: re-sits period 5

Application Deadline:

15 October 2012

Course Registration Period 4:

29 October - 25 November 2012



School of Business and Economics

Accommodation

UM Guesthouse

Most exchange students end up staying at the UM Guesthouse. The buildings are located in the vicinity of the Faculties and are easily accessible by bike or on foot. Unfortunately SBE cannot guarantee that all students who apply for a room at the Guesthouse actually get a room. Applications are processed on a first-come-first-served basis, and we have no influence on that process.

Office / Reception address:

Brouwersweg 100

6216 EG Maastricht

Phone: (0031) (0)43 388 5970

Fax: (0031) (0)43 346 7230

Email: guesthouse@maastrichtuniversity.nl

Postal address:

Brouwerseweg 100

Guesthouse UM

P.O. Box 1253

6201 BG Maastricht

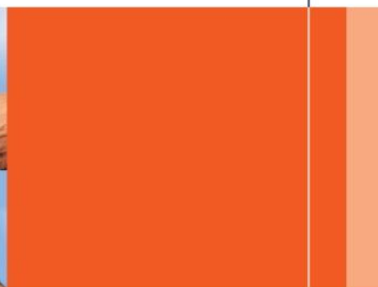
Internet: www.Maastrichthousing.com

Other Housing Options

Of course exchange students are not obliged to get a room in the UM Guesthouse, even though it is the easiest option. Students can also find a room on the private market. Check the following websites for alternatives:

- www.HousingAnywhere.com: local, outgoing students sublet their room for a short period of time to incoming students.
- www.Maastrichthousing.com: acts as intermediary for the local housing corporations in the so-called “social” rent sector, and is also the portal for the UM Guesthouse.

*It may be good to realise that SBE's International Relations Office **cannot and will not** interfere on your behalf in case of legal disputes, whether with the UM Guesthouse, MaastrichtHousing, HousingAnywhere, Kamerburo, or private persons or landlords. If faced with legal problems you are advised to go to the student law agency (“Studenten Rechtsbureau”), which is an agency for all UM students, run by UM Law Students.*



School of Business and Economics

Residence Permit/Visa

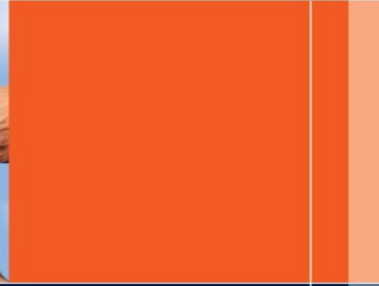
Nationals of the following countries do not need a visa to study in The Netherlands:

Members of the EU, EEA, Switzerland, Australia, Canada, Japan, Monaco, New Zealand, South Korea, United States of America, Vatican City State.

A visa is necessary for nationals of all other countries when staying for more than three months. All non-EU nationals need a residence permit for a stay of more than 3 months.

Please check the webpage of our Visa Office for more information:

<http://www.maastrichtuniversity.nl/visa>



School of Business and Economics

Nuffic Certificate

Students with the Chinese nationality (excluding British National Overseas) are required to submit a Nuffic Certificate. This is a document issued by Nuffic (Netherlands organization for international cooperation in higher education) that provides an assessment of a student's English language proficiency and of the validity of the diplomas and degrees. Chinese students need this document in order to seek admission to a Dutch institution of higher education and to ensure that they are sufficiently qualified to pursue their studies and will benefit from their stay in the Netherlands.

Chinese students who wish to enroll in an English-taught programme at a Dutch higher education institution are required to apply for a Nuffic Certificate (which was known as a Neso Certificate until 1 June 2010).

Please note that the registration for a "Nuffic Certificate" does NOT replace the regular application procedures of the Dutch universities and institutions of higher education.

The entire application procedure for the Nuffic Certificate is available on the Nuffic webpage via: <http://www.nuffic.nl/international-students> → How to prepare → Entry visas → Long stay visa → Nuffic Certificate for Chinese students → Application procedure.

We strongly recommend your students to register for the Nuffic Certificate at least four months prior to their intended departure for the Netherlands.